

Join us for a warm Mo State welcome!
You won't want to miss this!

Mo State Expo: Academics and Campus Resources

Explore academic programs and student resource offices.

Campus Shuttle Tours

Learn more about us with a unique 30-minute tour of campus.

Walking Tours

Join a current student for a walking tour. Tours are 30-45 minutes. Last tour leaves at 2 p.m.

Residence Hall Tours

See where you'll live as a Bear. Last tour leaves at 2 p.m.

Foster Recreation Center Tours

Discover your place on campus to exercise and learn about healthy living. Enter on the south side.

Ask Admissions

Ask questions about the admission process and complete a survey to get a free t-shirt!

Bear Business

Ready to be a Bear? Apply for admission in PSU Ballroom East.

Academic Open Houses

Explore the facilities and meet faculty, advisors and staff from your academic college of choice. Choose one and dive in!

Education Abroad Presentations

Delve into the benefits of studying abroad and what to expect during your travels. Offered twice

Financial Aid Presentations

Review the costs, scholarships, important dates and more.

Residence Life Presentations

Learn about our room layouts, amenities and meal plan options. Offered twice.

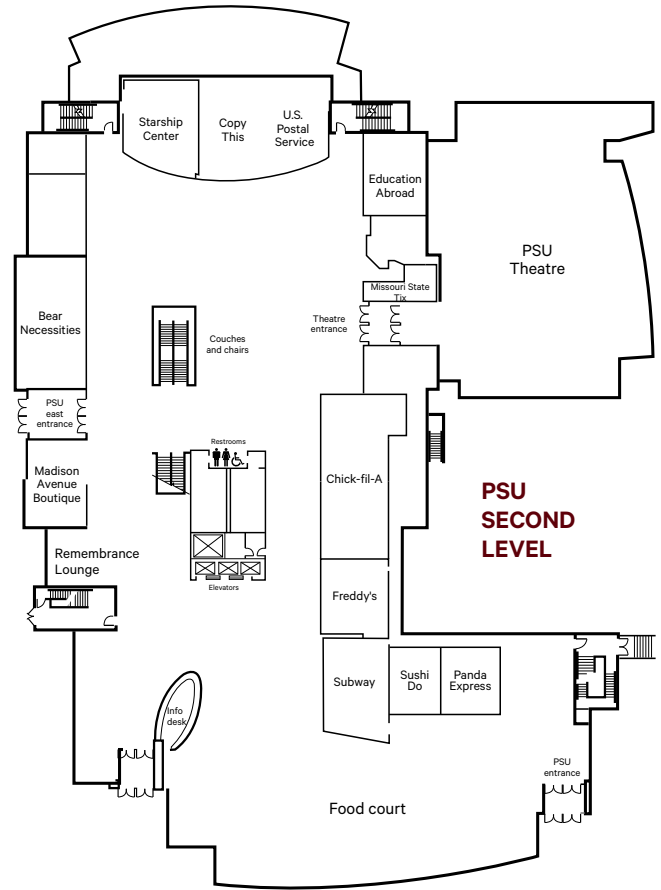
Mo State Baseball

Get a taste of campus life at the Mo State Bears vs. Western Kentucky game. First pitch at 2 p.m.

EXPLORE OUR FACILITIES

These facilities and services will be open for our Showcase guests to visit.

8:30-10:30 a.m.	Team Store inside GSB Arena Take home some BearWear using your 20% off discount!
10:30 a.m.-3 p.m.	Missouri State Bookstore Take home some BearWear using your 20% off discount!
12-1:30 p.m.	Foster Recreation Center This is <i>the</i> place on campus to work out and learn about healthy living. Enter on the south side.
12:30-2:30 p.m.	Residence Hall Tours See where you'll be living as a Bear. Last tour departs at 2 p.m.
12 -1:30 p.m.	Lunch in Blair-Shannon Dining Center and PSU food court Students eat for free at Showcase, and families may join using our special event rate.
10:30 a.m. -12 p.m.	Academic Open Houses See your future classrooms and hear from faculty members about our programs.
9 a.m.-6 p.m.	Meyer Library Explore your new favorite study spot.



MO STATE EXPO

8:45-9:30 a.m., Great Southern Bank Arena concourse

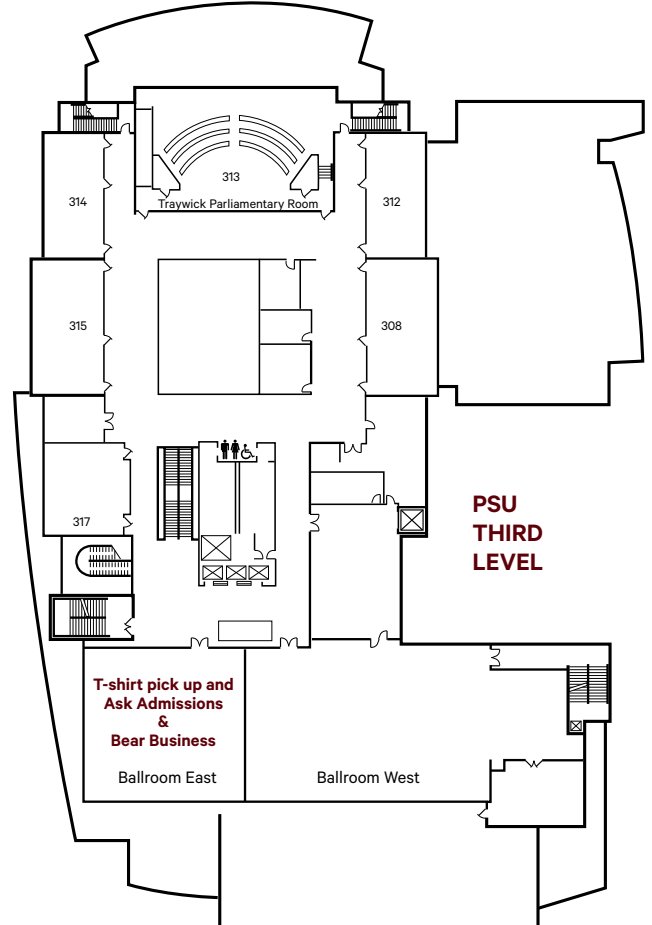
- Academic Advising and Transfer Center
- Band
- Campus Recreation
- College of Business
- College of Education
- College of Natural and Applied Sciences
- Darr College of Agriculture
- eFactory
- Foreign Language Institute
- McQueary College of Health and Human Services
- Military Science ROTC
- Residence Life, Housing and Dining Services
- Reynolds College of Arts, Social Sciences and Humanities
- Student Activities Council
- Student Employment
- The Standard, Missouri State's student-run newspaper
- University libraries

ASK ADMISSIONS AND BEAR BUSINESS

12-3 p.m., Plaster Student Union Ballroom East

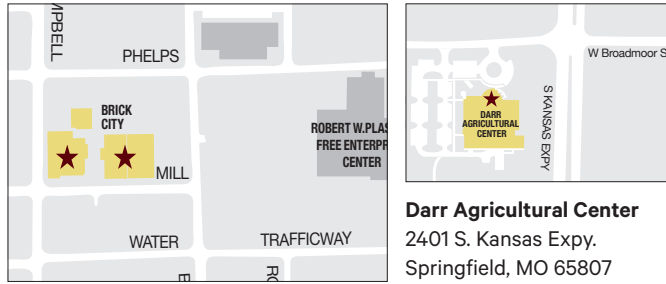
Ask questions and get answers from the admission experts! Show your completed survey confirmation to receive your free t-shirt.

Ready to apply? Stop by PSU ballroom east!

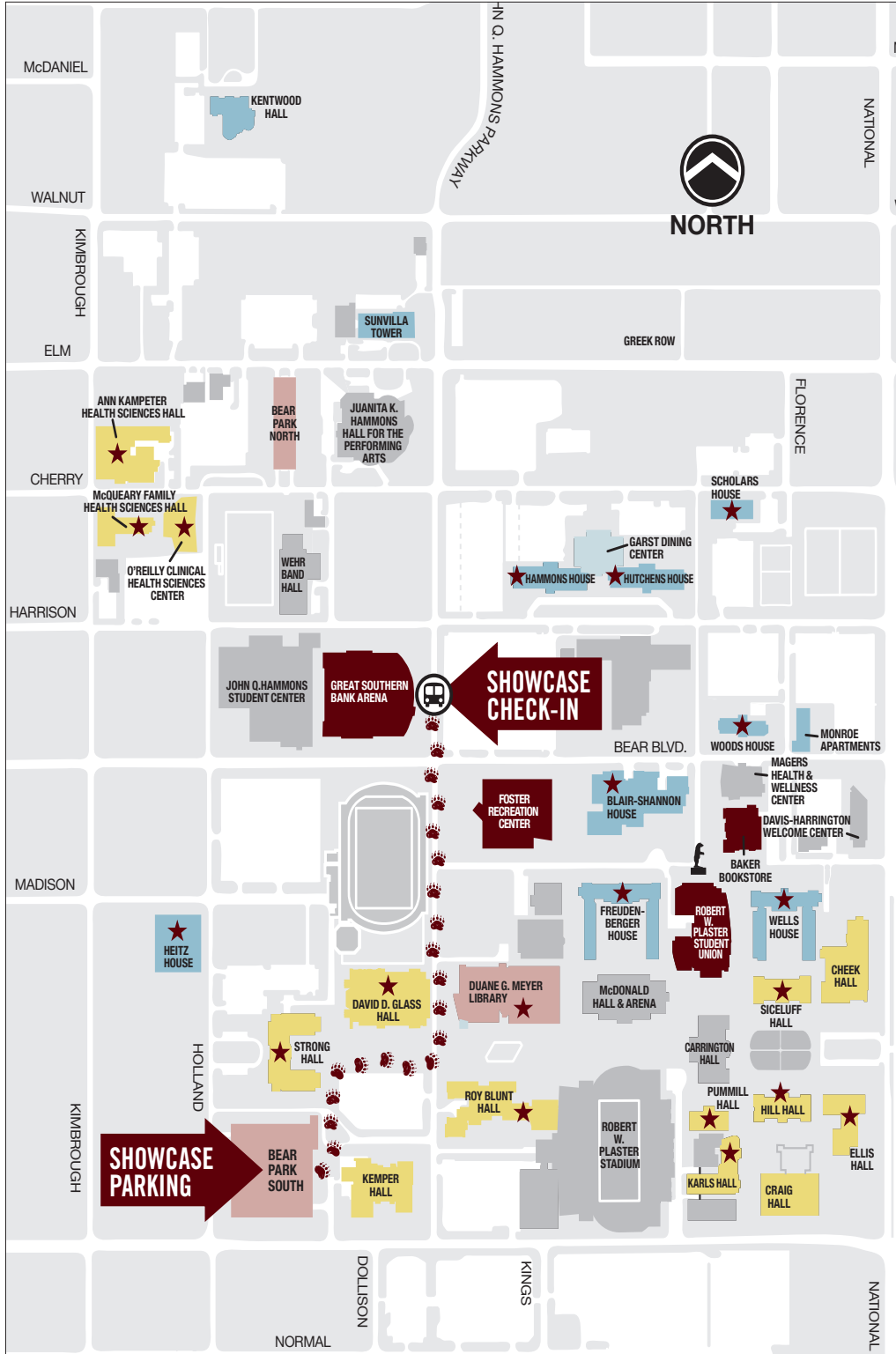


CAMPUS MAP

- Location of key Showcase activities (see Schedule At-A-Glance)
- Academic buildings
- ★ Open buildings
- Ⓜ PSU North Shuttle Stop
- Residence halls



Darr Agricultural Center
2401 S. Kansas Expy.
Springfield, MO 65807



ACADEMIC OPEN HOUSES

Catch tours and presentations about your areas of interest! Sessions are from 10:30 a.m.- 12 p.m. unless noted.

College of Business

Glass Hall 108

College of Education

Hill Hall

(Enter through front doors.)

College of Natural and Applied Sciences

Start in Blunt Hall Link

Darr College of Agriculture

Karls Hall 102

Tour Darr Agriculture Center from 2-4 p.m. Park at the Bond Learning Center, the first building on your left. Meet a tour guide in the lobby of Bond Learning Center.

McQueary College of Health and Human Services

McQueary Family Health Sciences Hall 126

Reynolds College of Arts, Social Sciences and Humanities

- **Department of art and design**
Brick City main lobby (Brick 1).
Shuttles leave from Bronze Bear statue in front of PSU.
- **Department of communication, media, journalism and film**
Strong Hall atrium and Strong Hall 150
- **School of criminology and criminal justice**
Strong Hall 200
- **Department of English**
Siceluff Hall 124
- **Department of history**
Strong Hall 410
- **Department of languages, cultures and religions**
Strong Hall 282
- **Department of music**
Ellis Hall atrium
- **Department of political science and philosophy**
Strong Hall 307
- **Department of sociology, anthropology and gerontology**
Strong Hall 405
- **The Standard news room**
Strong Hall 362

MAJORS LIST

Missouri State undergraduate students can choose from more than 90 majors that lead to more than 170 academic options. You can even create an individualized major if you know what you want to study but the specific degree is not offered.

DARR COLLEGE OF AGRICULTURE

Agricultural Business:

Enterprise Management
Finance and Management
Marketing and Sales

Agricultural Communications

Agriculture Education

Animal Science

Environmental Plant Science:

Crop Science
Horticulture
Plant Breeding and Biotechnology

Equine Science

General Agriculture:*

Agriculture
Agricultural Communication

Hospitality Leadership: §

Club Management
Food and Beverage
General Operations §
Lodging
Senior Living Management
Tourism

Natural Resources

Teaching of Agriculture[†]

Wildlife Conservation and Management

REYNOLDS COLLEGE OF ARTS, SOCIAL SCIENCES AND HUMANITIES

Anthropology

Art:

3-D Studies (Ceramics; Metals and Jewelry; Sculpture)
Computer Animation
Drawing
New Media
Painting
Photography
Printmaking

Art Education

Communication Studies §

Criminology and Criminal Justice §

Culture, Literature and Media:

Literature
Media

Dance

Design:

Graphic Design
Graphic Design and Illustration
Illustration
Sequential Art

Digital Film and Television Production

Electronic Arts:

Audio Studies
Computer Animation Studies
Interactive New Media Studies
Video Studies

English:

Creative Writing

Literature

English Education

Gerontology

Global Studies

History

History Education

Journalism

Literature

Modern Language:*

(Spanish only) §
Applied Business
Teacher Certification
Translation
Two Languages

Music:*

Composition
Instrumental Performance
Jazz Performance
Keyboard Performance
Vocal Performance

Music Education:

Instrumental
Vocal/Choral

Musical Theatre**

Philosophy

Political Science

Professional Writing §

Religious Studies §

Screenwriting and Film Studies

Sociology §

Strategic Communication

Teaching of Art[†]

Teaching of English[†]

Teaching of History[†]

Teaching of Modern Language[†]

Teaching of Music:†

Instrumental
Vocal/Choral

Teaching of Speech and Theatre:†

Communication
Theatre

Theatre

Theatre and Dance:

Acting for Stage and Screen **
Dance
Design, Technology and Stage Management

Visual Art and Culture:

Art History and Visual Culture
Museum Studies
Studio Art

COLLEGE OF BUSINESS

Accounting §

Construction Management

Data Analytics

Digital Fashion and Merchandising:

Fashion Design
Merchandising

Economics §

Entertainment Management

Entrepreneurship

Finance:

Corporate and Investments §
Financial Planning
Fintech

General Business §

Human Resource Management

Information Technology:

Application Development §
Cybersecurity §
IT Infrastructure §

Interior Design

International Business

Management and Leadership

Marketing:

Advertising and Promotion §
Marketing Management §
Marketing Research §
Professional Sales §

Risk Management and Insurance:

Enterprise Risk Management
Insurance

Supply Chain, Logistics and Operations Management §

COLLEGE OF EDUCATION

Career and Technical Education:

Business Education
Family and Consumer Sciences

Child and Family Development: §

Child Development §
Child Life
Family Studies
Youth Development §

Early Childhood Education

Elementary Education

Middle School Education:

Language Arts
Mathematics
Science
Social Sciences

Special Education/ Cross Categorical

McQUEARY COLLEGE OF HEALTH AND HUMAN SERVICES

Biomedical Sciences:

Anatomy and Physiology
Cell and Molecular Biology
Human Health Sciences

Clinical Laboratory Sciences- Medical Technology**

Communication Sciences and Disorders:

Audiology
Speech-Language Pathology

Esports Studies

Exercise Science:

Health Studies
Pre-Professional

Health Services:

Clinical Services §
Health Services §

Nursing (Completion Program for Registered Nurses) §

Nursing (Pre-Licensure, Four-Year Program) **

Nutrition and Dietetics

Physical Education[†]

Psychology §

Radiography:**

Education
Management
Science

Respiratory Therapy:**

Education
Management
Science

Social Work** §

Sport and Recreation Administration

Sports Medicine

COLLEGE OF NATURAL AND APPLIED SCIENCES

Biology:*

Environmental Biology and Evolution
Microbiology and Biotechnology
Wildlife Biology

Chemistry:*

Biochemistry
Chemistry

Chemistry Education Pathway

Civil Engineering[†]

Community and Regional Planning

Computer Science:

Computer Science
Data Science
Software Development

Earth Science

Education Pathway

Electrical Engineering[†]

Geography and Sustainability*

Geology

Geospatial Sciences

Mathematics:*

Actuarial Mathematics
Applied Mathematics
General Mathematics
Statistics

Mathematics Education[†]

Mechanical Engineering[†]

Physics:

Astronomy and Astrophysics
Career Prep Physics
Materials Science
Teaching Prep Physics
Physics Education Pathway

Wildlife Conservation and Management

INTERDISCIPLINARY PROGRAMS

General Studies

Individualized Major

PRE-PROFESSIONAL PROGRAMS

These are not majors. Instead, they are paths that prepare you to enter a graduate degree program. Many MSU majors will give you the foundation for these programs. Missouri State students are regularly admitted to leading schools in all professional areas.

Pre-Athletic Training

Pre-Chiropractic

Pre-Dentistry

Pre-Engineering

Pre-Law

Pre-Medicine

Pre-Occupational Therapy

Pre-Optometry

Pre-Pharmacy

Pre-Physical Therapy

Pre-Physician Assistant Studies

Pre-Veterinary Medicine

* Offered as a free-standing major (e.g., mathematics) or as a major with a specialization (e.g., mathematics with an option in statistics).

** Offered in cooperation with professional schools. Admission to Missouri State does not guarantee admission to the professional school. Explore undergraduate catalog for details.

† These programs are housed in the department of the subject area.

** A competitive admission program. Explore undergraduate catalog for program requirements.

§ Degrees that may be completed 100% online. For a full list of all majors, minors, certificates and graduate programs that are 100% online, explore: MissouriState.edu/Online

* Offered in cooperation with Missouri University of Science and Technology. Contact the cooperative engineering program director at [417-837-2315](tel:417-837-2315) or Engineering@MissouriState.edu.